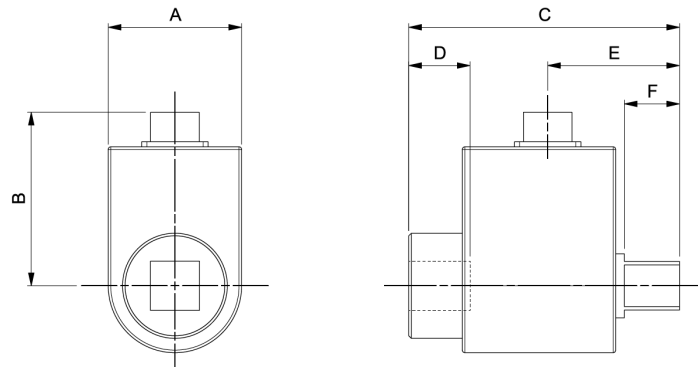


# ROTARY TRANSDUCERS

Rotary transducers are designed to measure the torque from continuously rotating shafts such as impulse tools and certain non-impulse tools with a severe clutch action. They will also work with instruments that cannot read the memory information, by inputting the relevant calibration details manually.



- ▮ Typically better than Class 1 for the primary classification range  $\pm 0.5\%$  of reading from 20% to 100% of full scale
- ▮ 'SMART' transducers have a built in memory circuit containing essential information about the transducer – Norbar's instruments immediately recognize the transducer and are ready for use
- ▮ Supplied with a calibration certificate
- ▮ Manufactured especially for torque controlled power tools including impulse wrenches
- ▮ Angle measurement also available



Capacity Nm	Item	Drive	Max. RPM - Continuous	Max. RPM - Intermittent	A mm	B mm	C mm	D mm	E mm	F mm
5	50708.xxx	1/4" M/F hex	5 000	11 000	30	58	116	-	49	26
20	50709.xxx	1/4" M/F hex	5 000	11 000	30	58	116	-	49	26
20	50710.xxx	1/4" M/F	5 000	11 000	30	58	72	10	33	7
75	50711.xxx	3/8" M/F	5 000	11 000	30	62	77	13	36	11
200	50712.xxx	1/2" M/F	2 500	7 600	42	67	87	16	42	15
250	50713.xxx	3/4" M/F	2 000	5 000	52	73	106	24	51	21
500	50714.xxx	3/4" M/F	2 000	5 000	52	73	106	24	51	21
1500	50715.xxx	1" M/F	1 000	4 400	63	79	125	29	61	26

## TRANSDUCER LEADS

Item*	Description
60216.200	Norbar Rotary Transducers
60217.200	Norbar Static & Annular Transducers
60223.200	Non-Norbar transducers
60224.200	Norbar / Non-Norbar Rotary Transducers
60225.200	Norbar / Non-Norbar Static Transducers

\*) The suffix of the item indicates the cable length in centimeters – all cables are standard 2 meters. Cables are available up to 15 meters in length.



60216.200



60223.200