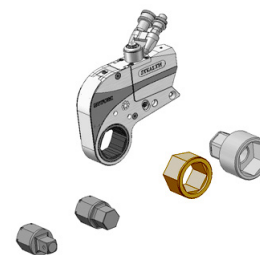


## HEX INSERT



| Insert A/F mm | Stealth 2 | Stealth 4 |
|---------------|-----------|-----------|
| 30/19         | ST2-30/19 | -         |
| 30/21         | ST2-30/21 | -         |
| 30/24         | ST2-30/24 | -         |
| 30/27         | ST2-30/27 | -         |
| 32/22         | ST2-32/22 | -         |
| 32/24         | ST2-32/24 | -         |
| 32/27         | ST2-32/27 | -         |
| 32/30         | ST2-32/30 | -         |
| 36/24         | ST2-36/24 | ST4-36/24 |
| 36/27         | ST2-36/27 | ST4-36/27 |
| 36/30         | ST2-36/30 | ST4-36/30 |
| 36/32         | ST2-36/32 | ST4-36/32 |
| 41/27         | ST2-41/27 | ST4-41/27 |
| 41/30         | ST2-41/30 | ST4-41/30 |
| 41/32         | ST2-41/32 | ST4-41/32 |
| 41/36         | ST2-41/36 | ST4-41/36 |
| 46/30         | ST2-46/30 | ST4-46/30 |
| 46/32         | ST2-46/32 | ST4-46/32 |
| 46/36         | ST2-46/36 | ST4-46/36 |
| 46/41         | ST2-46/41 | ST4-46/41 |
| 50/32         | ST2-50/32 | ST4-50/32 |
| 50/36         | ST2-50/36 | ST4-50/36 |
| 50/41         | ST2-50/41 | ST4-50/41 |
| 50/46         | ST2-50/46 | ST4-50/46 |
| 55/36         | ST2-55/36 | ST4-55/36 |
| 55/41         | ST2-55/41 | ST4-55/41 |
| 55/46         | ST2-55/46 | ST4-55/46 |
| 55/50         | ST2-55/50 | ST4-55/50 |
| 60/41         | ST2-60/41 | ST4-60/41 |
| 60/46         | ST2-60/46 | ST4-60/46 |
| 60/50         | ST2-60/50 | ST4-60/50 |
| 60/55         | ST2-60/55 | ST4-60/55 |
| 65/46         | -         | ST4-65/46 |
| 65/50         | -         | ST4-65/50 |
| 65/55         | -         | ST4-65/55 |
| 65/60         | -         | ST4-65/60 |
| 70/50         | -         | ST4-70/50 |
| 70/55         | -         | ST4-70/55 |
| 70/60         | -         | ST4-70/60 |
| 70/65         | -         | ST4-70/65 |
| 75/55         | -         | ST4-75/55 |
| 75/60         | -         | ST4-75/60 |
| 75/65         | -         | ST4-75/65 |
| 75/70         | -         | ST4-75/70 |
| 80/60         | -         | ST4-80/60 |
| 80/65         | -         | ST4-80/65 |
| 80/70         | -         | ST4-80/70 |
| 80/75         | -         | ST4-80/75 |
| 85/60         | -         | ST4-85/60 |
| 85/65         | -         | ST4-85/65 |
| 85/70         | -         | ST4-85/70 |
| 85/75         | -         | ST4-85/75 |

| Insert A/F mm | Stealth 8   | Stealth 14   |
|---------------|-------------|--------------|
| 55/36         | ST8-55/36   | ST14-55/36   |
| 55/41         | ST8-55/41   | ST14-55/41   |
| 55/46         | ST8-55/46   | ST14-55/46   |
| 55/50         | ST8-55/50   | ST14-55/50   |
| 60/41         | ST8-60/41   | ST14-60/41   |
| 60/46         | ST8-60/46   | ST14-60/46   |
| 60/50         | ST8-60/50   | ST14-60/50   |
| 60/55         | ST8-60/55   | ST14-60/55   |
| 65/46         | ST8-65/46   | ST14-65/46   |
| 65/50         | ST8-65/50   | ST14-65/50   |
| 65/55         | ST8-65/55   | ST14-65/55   |
| 65/60         | ST8-65/60   | ST14-65/60   |
| 70/50         | ST8-70/50   | ST14-70/50   |
| 70/55         | ST8-70/55   | ST14-70/55   |
| 70/60         | ST8-70/60   | ST14-70/60   |
| 70/65         | ST8-70/65   | ST14-70/65   |
| 75/55         | ST8-75/55   | ST14-75/55   |
| 75/60         | ST8-75/60   | ST14-75/60   |
| 75/65         | ST8-75/65   | ST14-75/65   |
| 75/70         | ST8-75/70   | ST14-75/70   |
| 80/60         | ST8-80/60   | ST14-80/60   |
| 80/65         | ST8-80/65   | ST14-80/65   |
| 80/70         | ST8-80/70   | ST14-80/70   |
| 80/75         | ST8-80/75   | ST14-80/75   |
| 85/65         | ST8-85/65   | ST14-85/65   |
| 85/70         | ST8-85/70   | ST14-85/70   |
| 85/75         | ST8-85/75   | ST14-85/75   |
| 85/80         | ST8-85/80   | ST14-85/80   |
| 90/70         | ST8-90/70   | ST14-90/70   |
| 90/75         | ST8-90/75   | ST14-90/75   |
| 90/80         | ST8-90/80   | ST14-90/80   |
| 90/85         | ST8-90/85   | ST14-90/85   |
| 95/75         | ST8-95/75   | ST14-95/75   |
| 95/80         | ST8-95/80   | ST14-95/80   |
| 95/85         | ST8-95/85   | ST14-95/85   |
| 95/90         | ST8-95/90   | ST14-95/90   |
| 100/80        | ST8-100/80  | ST14-100/80  |
| 100/85        | ST8-100/85  | ST14-100/85  |
| 100/90        | ST8-100/90  | ST14-100/90  |
| 100/95        | ST8-100/95  | ST14-100/95  |
| 105/85        | ST8-105/85  | ST14-105/85  |
| 105/90        | ST8-105/90  | ST14-105/90  |
| 105/95        | ST8-105/95  | ST14-105/95  |
| 105/100       | ST8-105/100 | ST14-105/100 |

| Insert A/F mm | Stealth 22   | Stealth 36   |
|---------------|--------------|--------------|
| 95/75         | ST22-95/75   | ST36-95/75   |
| 95/80         | ST22-95/80   | ST36-95/80   |
| 95/85         | ST22-95/85   | ST36-95/85   |
| 95/90         | ST22-95/90   | ST36-95/90   |
| 100/80        | ST22-100/80  | ST36-100/80  |
| 100/85        | ST22-100/85  | ST36-100/85  |
| 100/90        | ST22-100/90  | ST36-100/90  |
| 100/95        | ST22-100/95  | ST36-100/95  |
| 105/85        | ST22-105/85  | ST36-105/85  |
| 105/90        | ST22-105/90  | ST36-105/90  |
| 105/95        | ST22-105/95  | ST36-105/95  |
| 105/100       | ST22-105/100 | ST36-105/100 |
| 110/90        | ST22-110/90  | ST36-110/90  |
| 110/95        | ST22-110/95  | ST36-110/95  |
| 110/100       | ST22-110/100 | ST36-110/100 |
| 110/105       | ST22-110/105 | ST36-110/105 |
| 115/95        | ST22-115/95  | ST36-115/95  |
| 115/100       | ST22-115/100 | ST36-115/100 |
| 115/105       | ST22-115/105 | ST36-115/105 |
| 115/110       | ST22-115/110 | ST36-115/110 |
| 120/100       | ST22-120/100 | ST36-120/100 |
| 120/105       | ST22-120/105 | ST36-120/105 |
| 120/110       | ST22-120/110 | ST36-120/110 |
| 120/115       | ST22-120/115 | ST36-120/115 |
| 125/105       | ST22-125/105 | ST36-125/105 |
| 125/110       | ST22-125/110 | ST36-125/110 |
| 125/115       | ST22-125/115 | ST36-125/115 |
| 125/120       | ST22-125/120 | ST36-125/120 |
| 130/110       | ST22-130/110 | ST36-130/110 |
| 130/115       | ST22-130/115 | ST36-130/115 |
| 130/120       | ST22-130/120 | ST36-130/120 |
| 130/125       | ST22-130/125 | ST36-130/125 |
| 135/115       | ST22-135/115 | ST36-135/115 |
| 135/120       | ST22-135/120 | ST36-135/120 |
| 135/125       | ST22-135/125 | ST36-135/125 |
| 135/130       | ST22-135/130 | ST36-135/130 |
| 140/120       | ST22-140/120 | ST36-140/120 |
| 140/125       | ST22-140/125 | ST36-140/125 |
| 140/130       | ST22-140/130 | ST36-140/130 |
| 140/135       | ST22-140/135 | ST36-140/135 |
| 145/125       | ST22-145/125 | ST36-145/125 |
| 145/130       | ST22-145/130 | ST36-145/130 |
| 145/135       | ST22-145/135 | ST36-145/135 |
| 145/140       | ST22-145/140 | ST36-145/140 |