

HPD SERIES

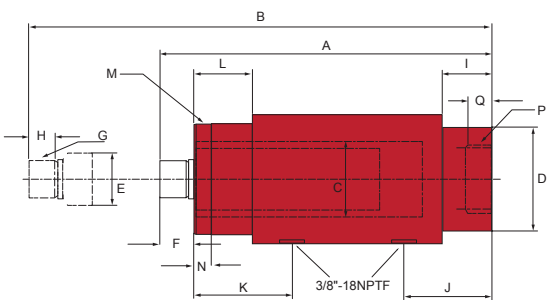
PRECISION DOUBLE ACTING CYLINDERS

- High strength steel construction
- One piece high grade alloy bearing for side load protection and longer life
- External plunger threads, internal base threads
- Polyurethane cup seal helps to provide an optimal performance
- High flow 3/8"-18NPTF ball couplers with dust caps included
- Maximum working pressure 700 bar.



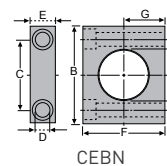
Item	Stroke (mm)	Min. height A (mm)	Outside Ø D (mm)	Push oil capacity (cc)	Pull oil capacity (cc)	Push effective area (cm ²)	Pull effective area (cm ²)	Weight (kg)
Push capacity: 9 tn (78 kN), Pull capacity: 4,5 tn (44 kN)								
HPD0906	155	350	64	175	99	11,4	6,5	6,6
HPD0910	257	452	64	291	165	11,4	6,5	8,4
Push capacity: 16 tn (139 kN), Pull capacity: 7,1 tn (69 kN)								
HPD1606	159	389	76	322	160	20,3	10,1	10,0
HPD1610	260	490	76	527	262	20,3	10,1	12,8

Push capacity	Cylinder bore Ø C (mm)	Plunger Ø E (mm)	Plunger protrusion F (mm)	Plunger thread G	Plunger thread length H (mm)	Base to inlet port J (mm)	Top to return port K (mm)	Collar length L (mm)	Collar thread M	Collar thread length N (mm)	Collar int. base thread P	Collar int. base thread length Q (mm)
9 tn	38	25	25	3/4"-16N	19	38	56	38	2"-12N	15	1 11/16"-18N	35
16 tn	51	36	29	1 1/8"-12N	25	54	73	54	2 5/8"-16N	25	2 3/16"-16N	41

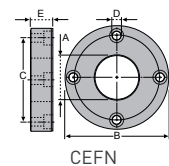


ACCESSORIES

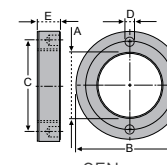
Item	A (mm)	B (mm)	C (mm)	D (mm)	E (mm)	F (mm)	G (mm)
CEBN09	50,8	101,6	73,2	13,5	25,4	82,5	44,5
CEBN16	66,8	130	95,5	19,5	35	101,6	52,3
CEFN09	50,8	121	98,6	10	25,4	-	-
CEFN16	66,8	143	115,8	13,5	35	-	-
CEN09	2"-12N	76	63,5	7	12,7	-	-
CEN16	2 5/8"-16N	92	79,2	7	19	-	-
CED09	25	23	1 11/16"-18N	19	33	24	3/4"-16N
CED16	32	28	2 3/16"-16N	25	48	30	1 1/2"-12N



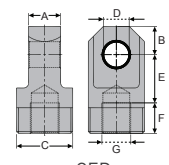
CEBN



CEFN



CEN



CED