

DOGA REACTION ARMS

DOGA reaction arms offer the widest selection for various applications. The reaction arm's function is to absorb the counterforce from the wrench, eliminating the need for a separate counterforce arm attached to the wrench. These solutions primarily aim to improve ergonomics and reduce workload.

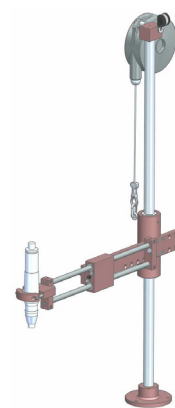
There are several types of reaction arms available – the most common being linear, articulated, and telescopic arms. Reaction arms are often designed for specific applications and can be equipped with various brakes and position monitoring features as needed.

BA SERIES LINEAR ARMS

Reaction Arm	Max. torque Nm	Tool Ø mm	Stroke mm	Max. load kg	Item
BA 5	5	25 - 42	200	0,9	4-5200085
BA 12	12	27 - 50	225	1,2	4-5201000
BA 12T	12	27 - 50	225	2	4-5200823
BA 25	25	28 - 52	250	2,2	4-5200076
BA 25T	25	28 - 52	250	3	4-5200721
BA 40	40	28 - 52	295	2,2 / 4*	4-5200067
BA 40T	40	28 - 52	295	4	4-5200825
BA 100	100	28 - 52	330	3,5 / 6*	4-5200068
BA 100T	100	28 - 52	330	6	4-5283105
BA 200	200	no holder**	345	8	4-5201092
BA 400	400	no holder**	400	12	4-5201093
BA 1000	1000	no holder**	400	16	4-5201094

*] With additional balancer 4-5200143

**] BA 200/400/1000 are delivered without clamp, floor post and non anodized



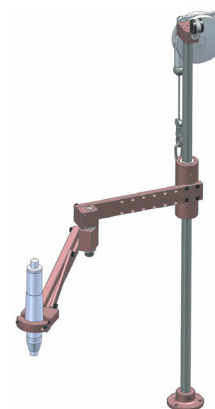
BA 5/12/25/40/100

BA-R SERIES ARTICULATED REACTION ARMS

Reaction Arm	Max. torque Nm	Tool Ø mm	Max. radius mm	Max. load kg	Item
BA LR	-	25 - 42	450	0,9	4-5200826
BA 5 R	5	25 - 42	420	0,9	4-5200098
BA 12 R	12	27 - 50	450	1,2	4-5201001
BA 12 R	12	27 - 50	600	1,2	4-5201002
BA 25 R	25	28 - 52	445	2,2	4-5200070
BA 25 R	25	28 - 52	600	2,2	4-5200274
BA 25 R	25	28 - 52	800	2,2	4-5200275
BA 40 R	40	28 - 52	630	2,2 / 4*	4-5200071
BA 40 R	40	28 - 52	800	2,2 / 4*	4-5200276
BA 40 R	40	28 - 52	1 000	2,2	4-5200277
BA 100 R	100	28 - 52	715	3,5 / 6*	4-5200072
BA 100 R	100	28 - 52	900	3,5 / 6*	4-5200278
BA 100 R	100	28 - 52	1 100	3,5	4-5200279

Delivered with standard clamp for straight tool.

*] With additional balancer 4-5200143.



BA 5/12/25/40/100 R

ACCESSORIES FOR REACTION ARMS

BA REACTION ARM ACCESSORIES

Reaction Arm	Stroke (mm)	Item
Anti rotation clamp		
BA 5		4-5200348
BA 12 & 25		4-5200116
BA 40 & 100		4-5200117
Extended slides		
BA 12	130	4-5200120
BA 25	130	4-5200720
BA 40	170	4-5200122
BA 100	200	4-5200123
BA 12	230	4-5200124
BA 25	210	4-5200125
BA 40	295	4-5200126
BA 100	330	4-5200127
Height detection kit with sensor		
BA 5		4-5200421
BA 12 & 25		4-5200422
BA 40 & 100		4-5200423
Floor post		
BA 100/200/400		4-5201096
BA 1000		4-5201097
Auto rest position kit		
BA 5 & 12		4-5200118
BA 25 & 40		4-5200119
Tool interface		
BA 200		4-5201105
BA 400		4-5201106
BA 100/E34/E44 series (Stanley)		4-5201124
BA 200/E45/E55 series (Stanley)		4-5201125

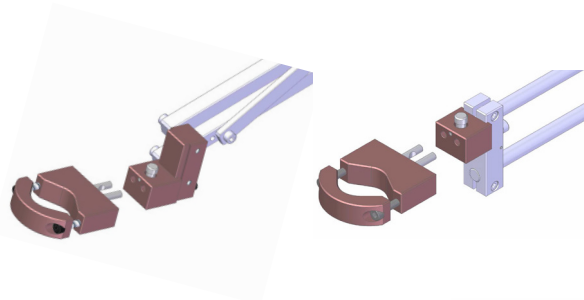
BA-R REACTION ARM ACCESSORIES

Reaction Arm	Tool Ø mm	Item
Clamp for angle nutrunner		
BA 12 R	27 - 50	4-5200089
BA 25 & 40 R	28 - 52	4-5200090
BA 100 R	28 - 52	4-5200091
Clamp for pistol tool		
BA 12 R	27 - 50	4-5200087
BA 25 & 40 R	28 - 52	4-5200088
2 axis clamp		
BA 12 R	27 - 50	4-5200093
BA 25 & 40 R	28 - 52	4-5200094
Swivel clamp mounting for angle nutrunner		
BA 12 R	27 - 50	4-5250514
BA 25 & 40 R	28 - 52	4-5250515
Swivel^(a) / indexable^(b) / rotating^(c) clamp for angle nutrunner		
BA 40 R		4-5250516
BA 100 R		4-5250517
Auto rest spring		
BA 5/12 R		4-5200849
BA 25 R		4-5200850
BA 40 R		4-5200851

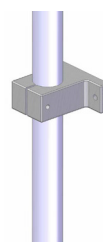
BA- & BA-R REACTION ARMS ACCESSORIES

Quick change clamp			
Reaction arm	BA Adapter	BA-R Adapter	Item
BA 12 / BA 12 R	4-1201109	4-5200847	4-5201003
BA 25 / BA 25 R	4-1201110	4-5200848	4-5200017
BA 40 / BA 40 R	4-1201111	4-5200848	4-5200017

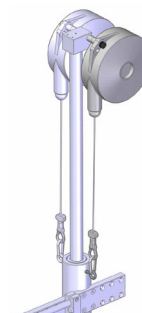
Reaction Arm	Item
Inverse mounting kit	
BA 5 / BA 5 R	4-5200385
BA 12&25 / BA 12&25 R	4-5200128
BA 40&100 / BA 40&100 R	4-5200129
Pole upper clamp	
BA 12&25 / BA 12&25 R	4-5200130
BA 40&100 / BA 40&100 R	4-5200131
Additional balancing kit	
BA 40 / BA 40 R	4-5200143
BA 100 / BA 100 R	4-5200143



Inverse mounting



Pole upper clamp



Additional balancer